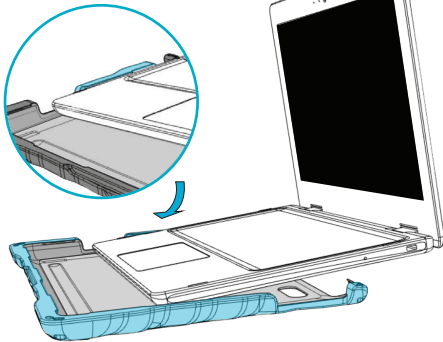


1

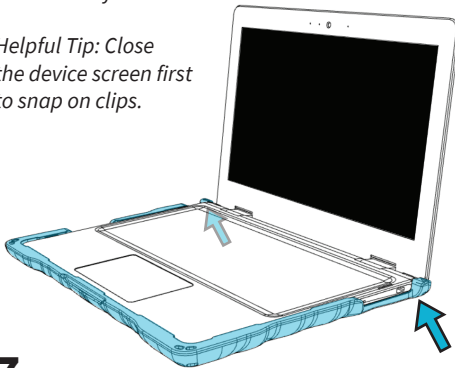
Slide the device keyboard under the bottom case's left side clip.



4

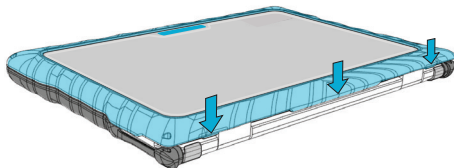
Carefully press the rear corner clips to snap onto the keyboard.

Helpful Tip: Close the device screen first to snap on clips.



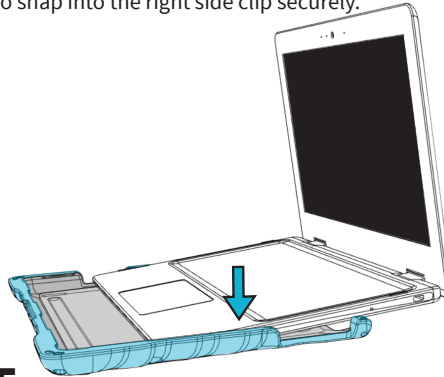
7

Close the case and press on the clips located on the bottom of the top case. Make sure the clips are securely attached



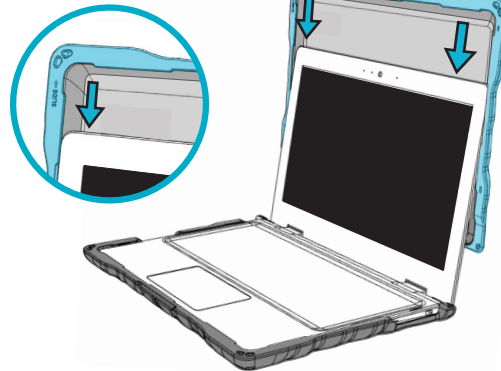
2

Press the other side of the keyboard down to snap into the right side clip securely.



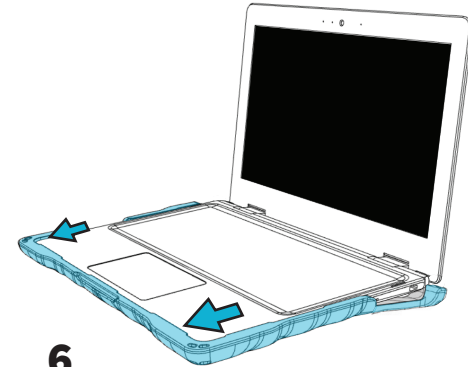
5

Slide the top case down, to secure the screen behind the side clips, until the device reaches the case's top edge.



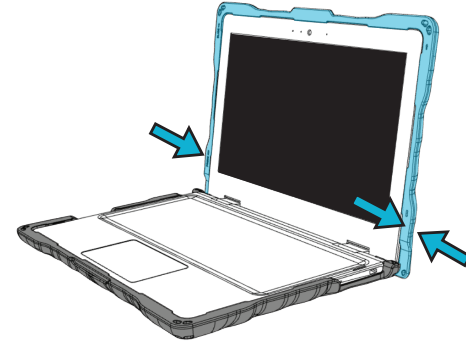
3

Push the keyboard forward until it is flush with the front edge of the bottom case.



6

Press the lower side clips over the device, with pressure from both sides, to snap into place securely.



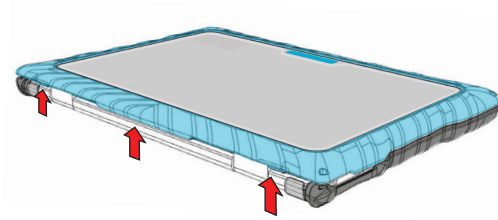
CRITICAL!
FOLLOW STEPS 1 - 3 IN ORDER

Failure to do so may result in
damage to the device.



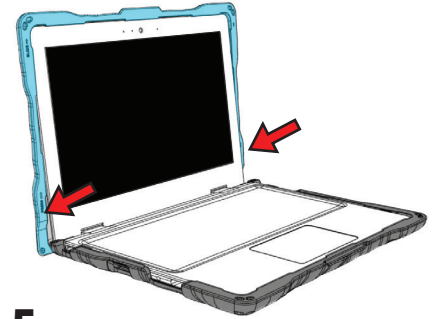
1

Unhook the 3 clips located on the top case's bottom, near the spine.



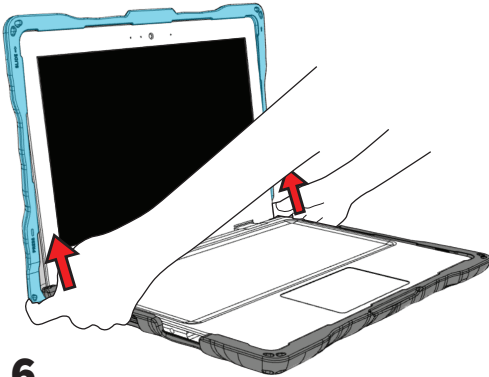
2

Push the lower left and right side clips outward to release the bottom of the top case from the device.



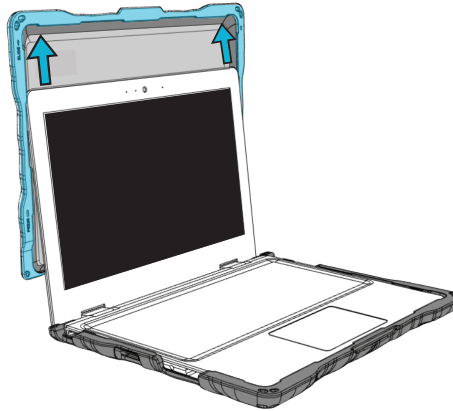
3

Start sliding the top case off by pushing up with your fingers on the bottom corners.



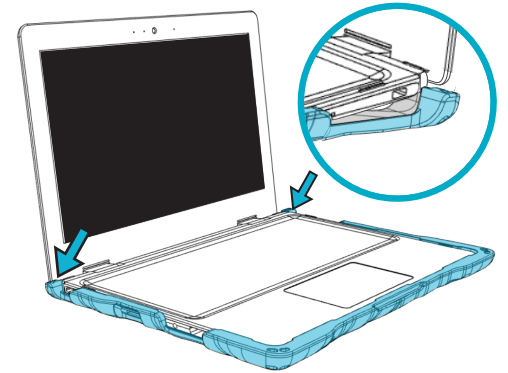
4

Gently slide the top case up and off the device to release it from the upper side clips.



5

Gently push the rear clips down to unhook from the device.



6

Push the left and right side clips down past the device, one side at a time, to release it from the bottom case.

